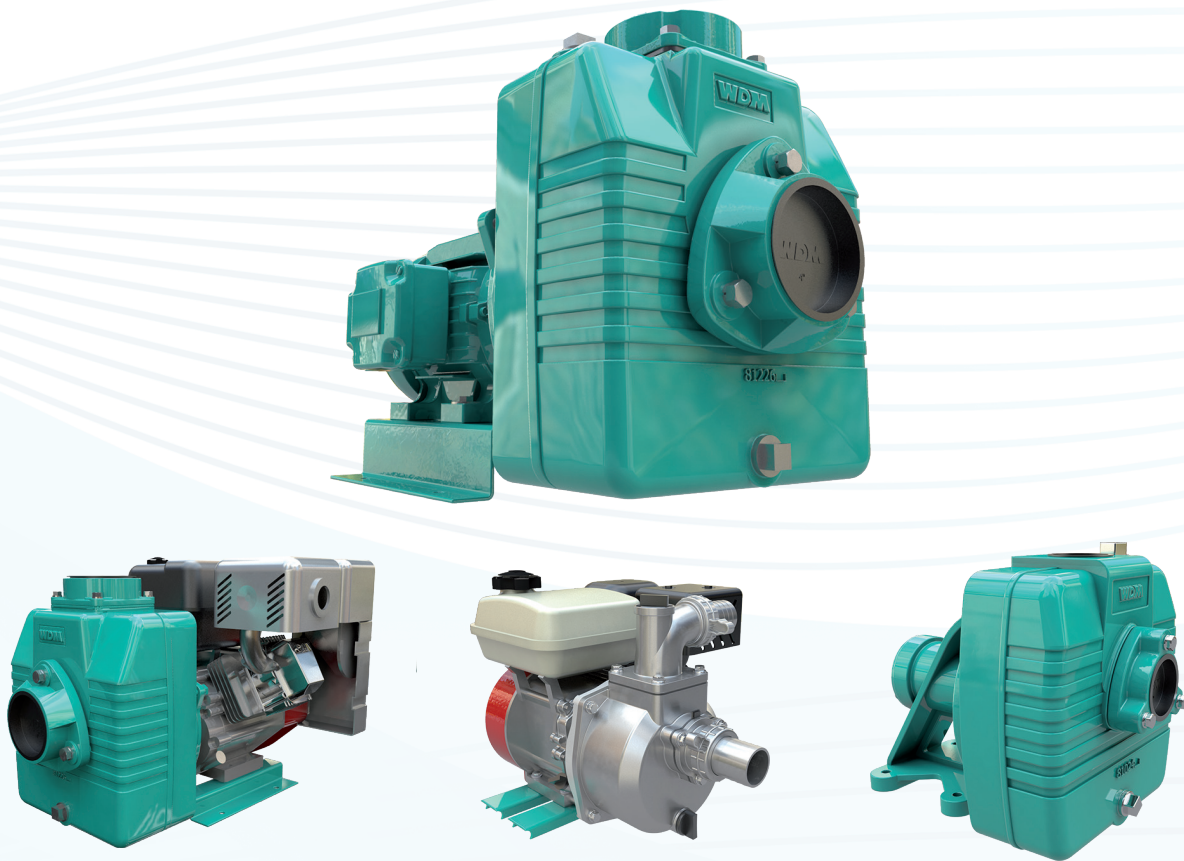


WDM PUMPS



AE / AG / AAG / AU

Self Priming Pumps

WDM Water Systems

AE / AG / AAG / AU



Benefits

- Variety of sizes
- Flexible installation methods
- Long service life
- Easy Maintenance

Applications

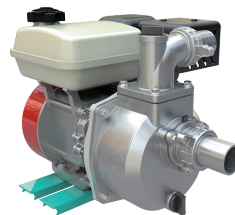
- Clean water or waste water with non-abrasives
- Construction Industry
- Small space drainage
- Transportation of liquids
- Agriculture
- Irrigation
- Recirculation
- Fluid drainage
- Municipal & environmental



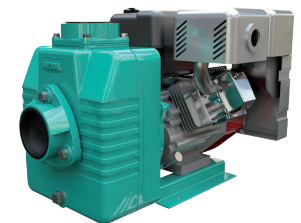
AE



AU

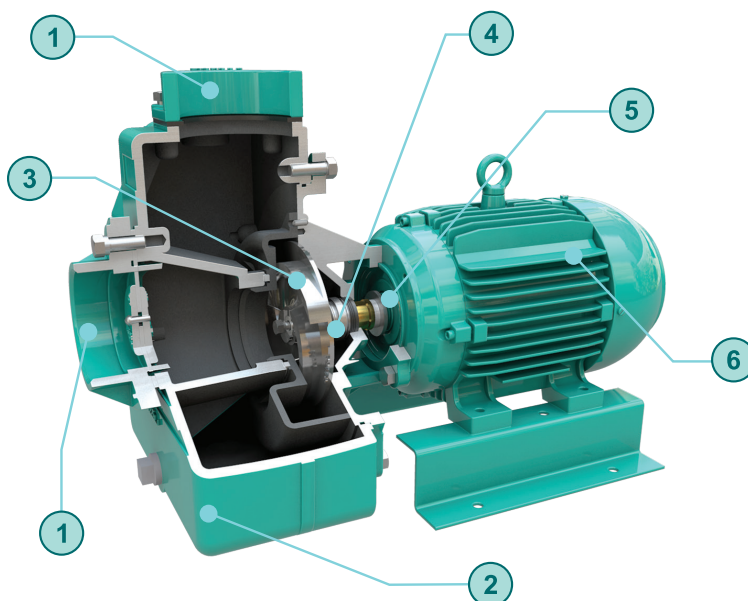


AAG



AG

Performance	
Flow	Up to 3,600 gpm
Head	Up to 196 ft
Temperature	Up to 158 °F
Discharge Flange	Up to 10"
Max. working pressure	175 psi

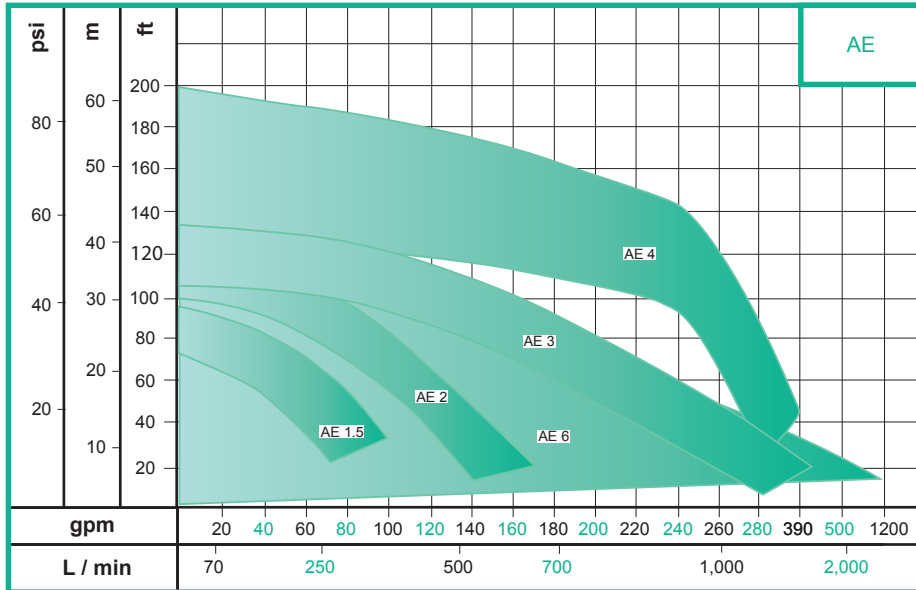


- 1 Threaded suction and discharge up to 10"
- 2 Cast iron construction
- 3 Cast iron semi-open dynamically balanced impeller
- 4 1.25" bronze sleeve
- 5 Ceramic/carbon/Buna-N mechanical seal
- 6 ODP or TEFC motors up to 15 hp

AE / AG / AAG / AU

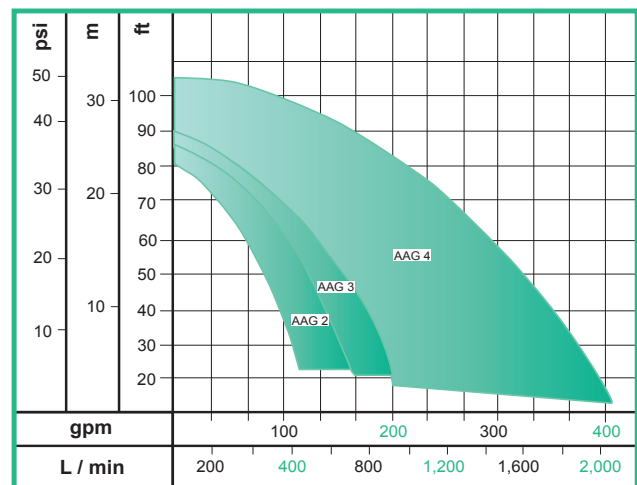
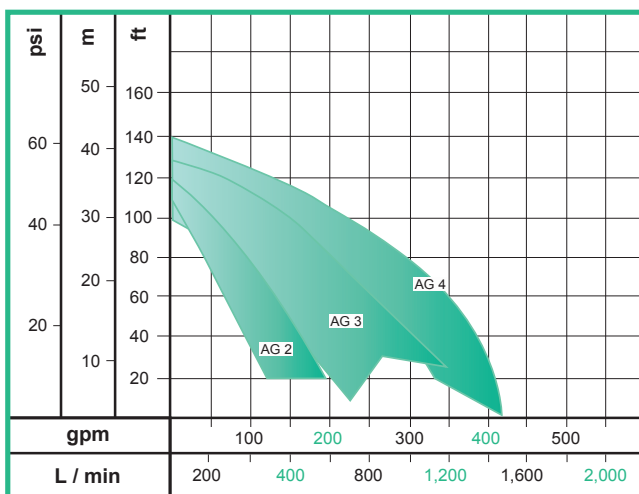


Selection chart



Model	Suc.	Disch.	hp
AG 2	2"	2"	3.5 - 8
AG 3	3"	3"	13 - 6
AG 4	4"	4"	13 - 18

Model	Suc.	Disch.	hp
AAG 1	1"	1"	1.5
AAG 2	2"	2"	3.5 - 6.5
AAG 3	3"	3"	5.5-6.5
AAG 4	4"	4"	13



Distributed by:



WDM Pumps has expanded its brand as an international manufacturer of fluid handling pumps by consistently meeting and exceeding the needs customers for pumps.

Continuing a tradition of more than 50 years, WDM Pumps manufactures quality electric and engine driven pumps for diverse commercial and industrial applications. Our continued growth is based on a commitment to high standards for efficient product design, production, sales, and customer support.

Our customers rely on our world-class team of experienced WDM Pumps engineers, technicians, and product application specialists.

WDM offers pump products and related equipment for a wide variety of industries, including industrial, agricultural, and construction. The WDM Pumps product line includes self priming, flexible coupled, close coupled, diesel and gasoline driven centrifugal pumps, in addition to submersible solids handling products.

WDM Pumps plants are strategically located throughout the Americas in the United States, Colombia, Mexico, Panama, Argentina, and Guatemala.



www.wdmpumps.com

info@wdmpumps.com

4034 Mint Way, Dallas, TX 75237, USA.
Phone: (214) 337-8780
sales@wdmpumps.com